

## BIOS upgrade using LiveUpdate 3

**Note:**

**This tutorial and its content are provided for the customer's reference use only. MSI is not responsible for any loss of data or damages arising from the use of this tutorial and/or content. Use it at your own risks!**

**WARNING!!**

Do not flash the BIOS if your system is running fine. Please proceed with caution when performing this task. Or you can use MSI Live Update 3 to update the BIOS but only when the Operating System is running stably.

Finally, before updating the BIOS, make sure to note all BIOS settings you have made manually (such as Boot Sequence, DRAM Timing & Voltage, etc.), because updating the BIOS will reset all BIOS settings back to factory defaults.

### Part A. MSI Live Update 3 (Internet Explorer only)

It is a program developed by MSI for updating to the latest BIOS, Drivers, Firmware and MSI Utilities for all of your MSI products. It is convenient and easy to use. You may obtain this MSI LiveUpdate Utility 3 from the links below,

Primary Link:

<http://tw.msi.com.tw/autobios/seriesexe/liveupdate.exe>

Secondary Links:

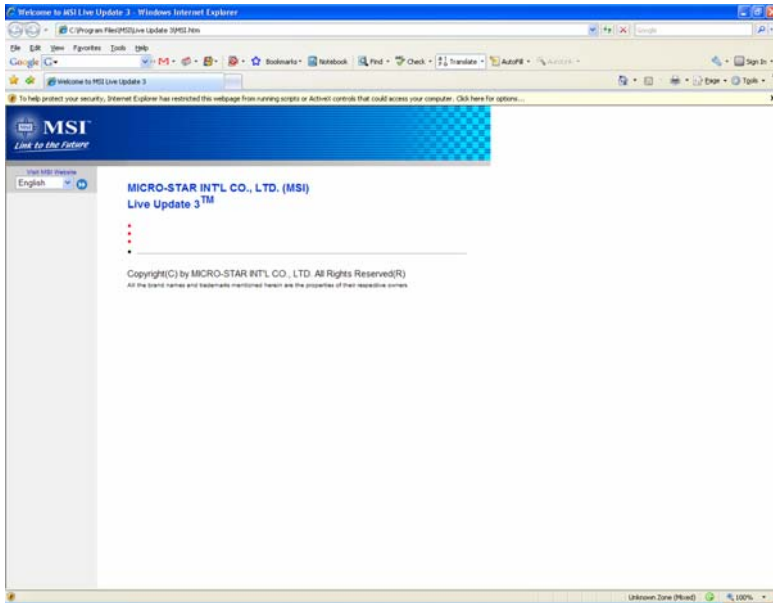
<http://global.msi.com.tw/index.php?func=downloadfile&dno=4862&type=utility>

<http://asia.msi.com.tw/index.php?func=downloadfile&dno=4862&type=utility>

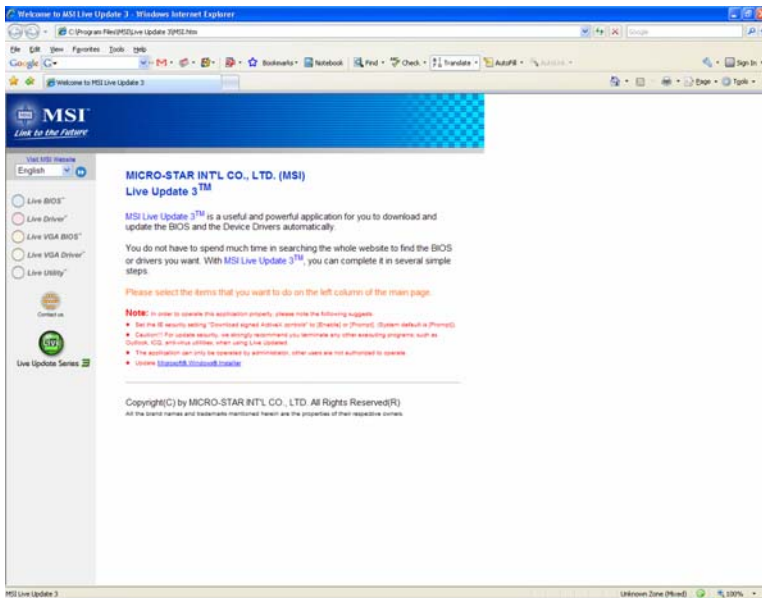


**The LiveUpdate Utility version used with this tutorial is v3.95**

**Step 1** – You will see the message in the yellow bar showing “To help protect your security, Internet Explorer has restricted this webpage from running scripts or ActiveX controls that could access your computer. Click here for options...”, Click on it and click on Allow Blocked Content.



**Step 2** – You will now be able to choose an option from the left menu with the following options.  
**Live BIOS / Live Driver / Live VGA BIOS / Live VGA Utility / Live Utility**



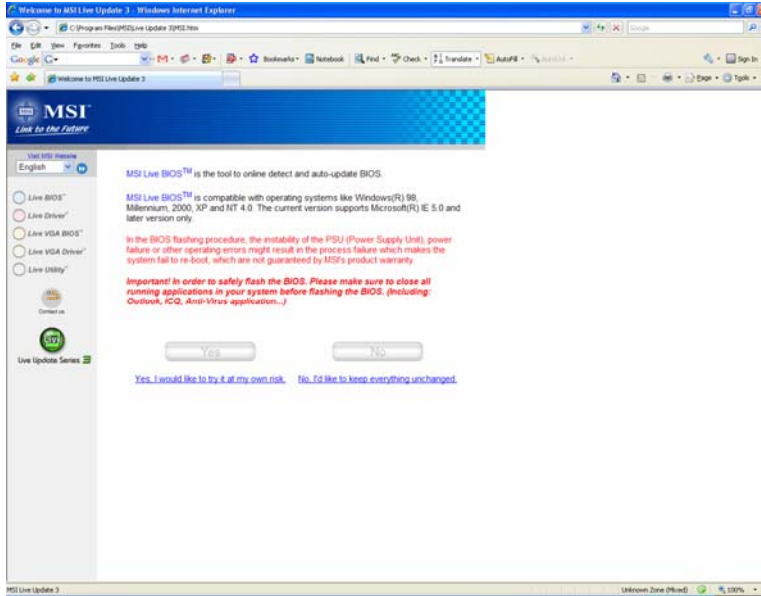
**Step 3** – In this tutorial, we will use Live BIOS. Click on Live BIOS will give you the following warning message. Click on Yes to agree that you would like to try it at your own risk.

MSI Live BIOS™ is the tool to online detect and auto-update BIOS.

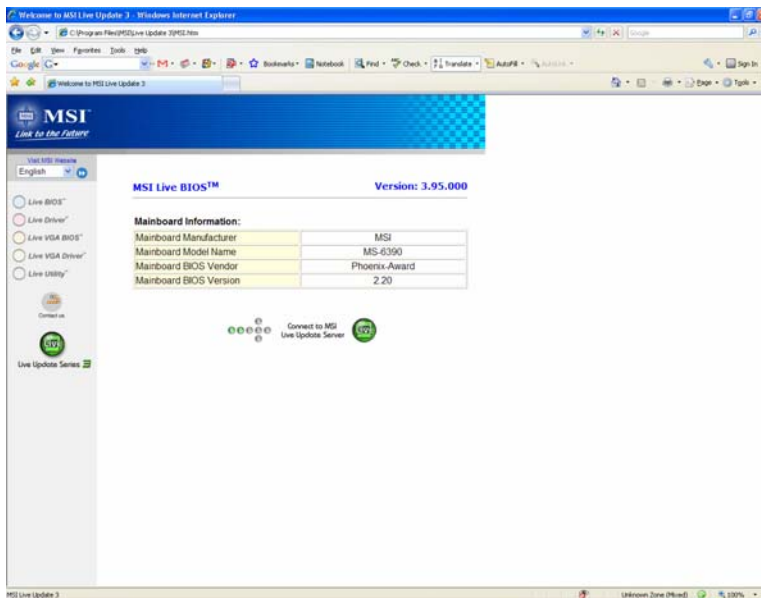
MSI Live BIOS™ is compatible with operating systems like Windows(R) 98, Millennium, 2000, XP and NT 4.0. The current version supports Microsoft(R) IE 5.0 and later version only.

In the BIOS flashing procedure, the instability of the PSU (Power Supply Unit), power failure or other operating errors might result in the process failure which makes the system fail to re-boot, which are not guaranteed by MSI's product warranty.

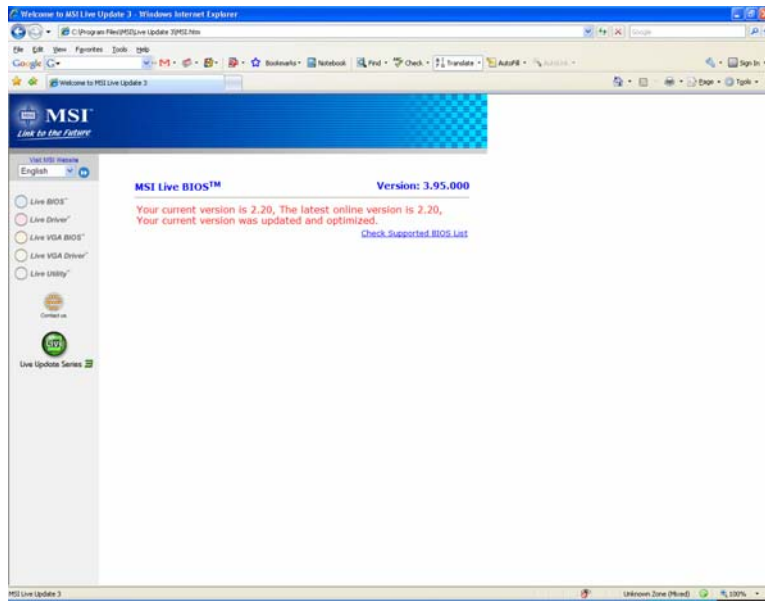
Important! In order to safely flash the BIOS. Please make sure to close all running applications in your system before flashing the BIOS. (Including: Outlook, ICQ, Anti-Virus application...)



**Step 4** – The utility will scan the existing MSI product as well as MSI Update Server for newest BIOS. Click on Connect to MSI Live Update Server to continue.



**Step 5** – You may be informed that the existing utility is outdated and the software will attempt to update itself to the latest version. Now the software will scan your system and check for newer BIOS. If you have newer BIOS then the software will inform you and stop.



**Step 6** – If there is a newer BIOS update for your motherboard, then go ahead and upgrade it. You may choose to update with a Floppy Disk or in Windows. And we will go ahead and do this in the Windows, and skip the Emergency Disk.

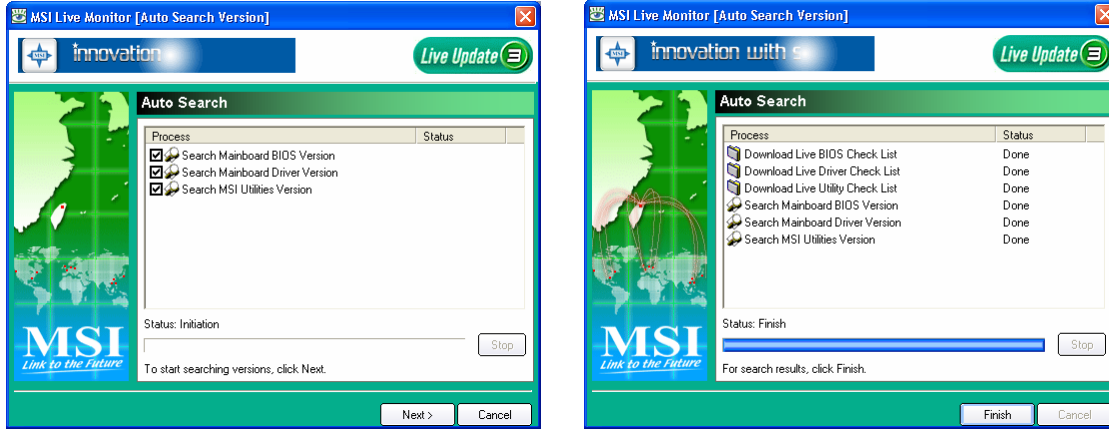
When BIOS flash is completed, you will be notified and asked to reboot your computer. You will see an error message showing “CMOS Checksum Error - Defaults Loaded”, simply press F1 to go into the BIOS setup and Load Optimized Defaults (Or Load BIOS Defaults).

Go to “Standard CMOS Features”/ “System Information” to verify that you have the latest BIOS version, and you should go ahead and adjust your Boot Sequence under Advanced BIOS to set CD/DVD as first boot device, HDD as second, pres F10 to save and exit BIOS.

**BIOS flash complete.**

### Part B. Alternate Way with Live Update Utility 3

On the system tray, there is an icon called MSI Live Monitor, you can right click on the icon and click on Auto Search, the following Window will pop up and you can choose what items that you want to search for updates, and then click on Next to continue.



If there are new updates, the software will show numbers of updates and you may choose what to update. Select the BIOS update for this tutorial.



When BIOS flash is completed, you will be notified and asked to reboot your computer. You will see an error message showing “CMOS Checksum Error - Defaults Loaded”, simply press F1 to go into the BIOS setup and Load Optimized Defaults (Or Load BIOS Defaults).

Go to “Standard CMOS Features”/ “System Information” to verify that you have the latest BIOS version, and you should go ahead and adjust your Boot Sequence under Advanced BIOS to set CD/DVD as first boot device, HDD as second, pres F10 to save and exit BIOS.

**BIOS flash complete.**